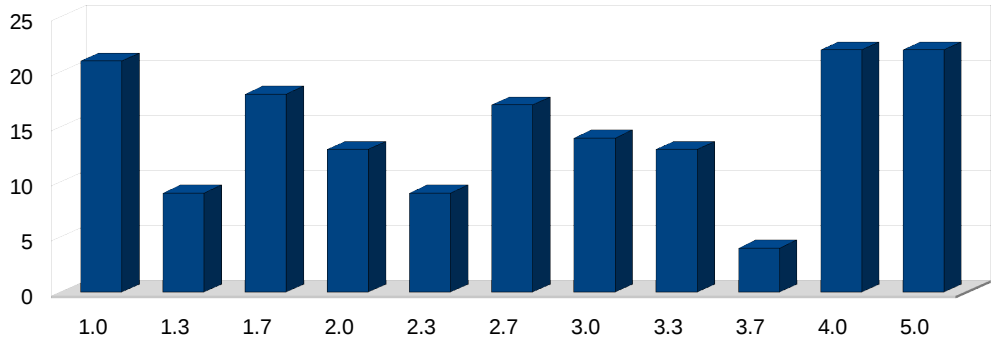


Informatik Bachelor

Matrikelnr.	A1	A2	A3	A4	A5	A6	Summe	Note
229321	12.0	9.5	12.0	5.0	16.0	17.0	71.5	2.7
249286	11.0	11.5	12.0	27.0	17.0	16.0	94.5	1.0
251230	11.0	7.0	12.0	8.0	11.0	6.0	55.0	3.7
259100	7.0	6.5	11.5	5.0	2.0	2.5	34.5	5.0
259343	8.0	8.5	9.5	8.0	1.0	0.0	35.0	5.0
260661	11.0	10.0	10.0	25.5	8.5	14.0	79.0	2.0
261378	11.0	7.0	12.0	16.5	15.0	0.0	61.5	3.3
262999	12.0	11.0	12.0	17.0	4.0	1.5	57.5	3.7
263631	7.0	12.0	11.0	24.0	13.5	7.0	74.5	2.3
265235	11.0	11.0	12.0	15.0	13.0	10.0	72.0	2.7
266260	11.0	4.0	9.5	8.0	1.5	7.0	41.0	5.0
268035	7.0	10.0	12.0	24.5	8.0	0.0	61.5	3.3
273478	9.0	9.0	12.0	10.0	6.0	4.0	50.0	4.0
273810	8.0	9.0	12.0	25.0	12.0	6.0	72.0	2.7
275305	11.0	12.0	10.0	15.5	11.0	9.5	69.0	2.7
276677	3.0	12.0	11.0	2.5	4.0	4.5	37.0	5.0
276711	11.0	11.0	12.0	18.0	5.0	11.5	68.5	2.7
277013	14.0	11.5	12.0	12.0	13.0	11.0	73.5	2.3
277058	9.0	3.5	9.0	16.0	12.5	0.0	50.0	4.0
279034	11.0	9.5	10.0	24.5	17.5	5.0	77.5	2.0
279057	11.0	7.0	12.0	2.0	15.0	1.0	48.0	5.0
279157	8.0	11.0	11.0	6.5	1.0	4.0	41.5	5.0
279555	7.0	12.0	12.0	11.5	5.0	3.0	50.5	4.0
279564	10.0	8.5	11.5	25.0	17.0	11.5	83.5	1.7
280019	10.0	7.5	7.0	13.0	5.5	1.0	44.0	5.0
280250	12.0	3.5	12.0	18.0	17.0	7.5	70.0	2.7
281138	10.0	9.5	11.5	18.0	11.0	0.0	60.0	3.3
281238	14.0	12.0	12.0	28.0	17.0	11.5	94.5	1.0
281244	10.0	10.5	12.0	17.5	15.0	4.0	69.0	2.7
281610	6.0	1.0	10.0	14.0	0.0	0.0	31.0	5.0
281756	8.0	0.0	8.5	25.0	11.0	0.5	53.0	4.0
282995	8.0	11.0	9.5	7.0	13.0	4.5	53.0	4.0
283010	13.0	12.0	12.0	27.0	16.5	16.0	96.5	1.0
283095	9.0	11.0	12.0	16.0	15.0	9.0	72.0	2.7
283132	4.0	12.0	9.5	25.0	13.0	0.0	63.5	3.3
283382	7.0	8.0	7.0	0.0	1.5	0.5	24.0	5.0
283399	12.0	11.5	11.0	27.0	12.0	0.0	73.5	2.3
283741	9.0	10.5	12.0	16.5	4.0	0.0	52.0	4.0



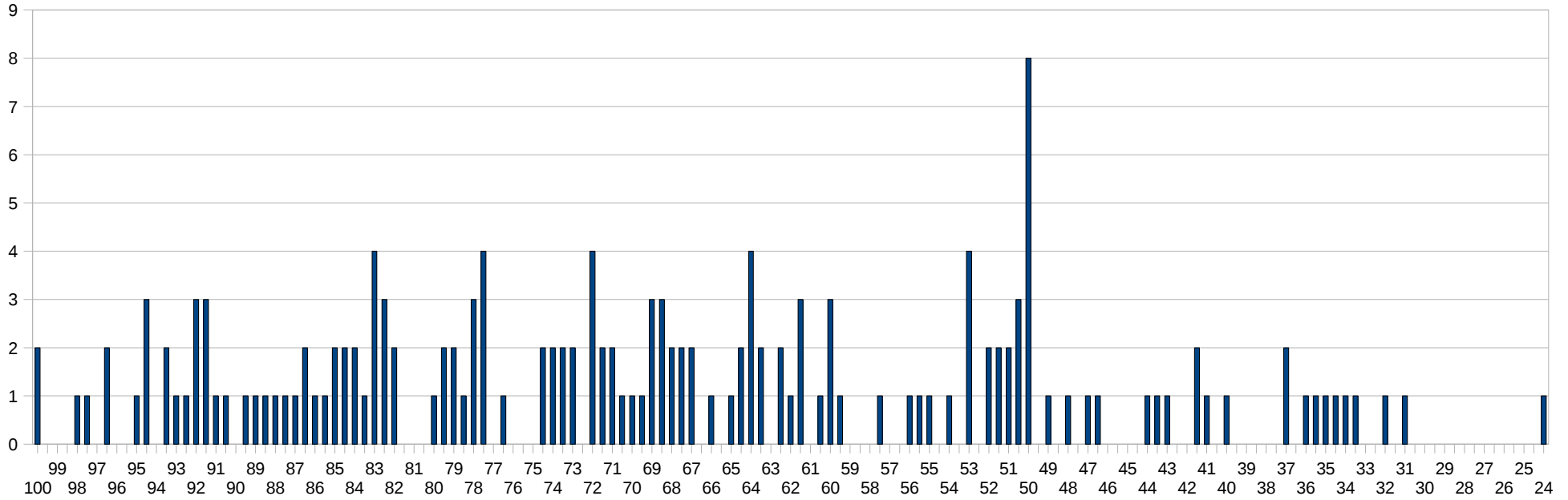
1.0	21
1.3	9
1.7	18
2.0	13
2.3	9
2.7	17
3.0	14
3.3	13
3.7	4
4.0	22
5.0	22

283996	12.0	10.0	12.0	19.0	0.5	8.5	62.0	3.3
284000	8.0	8.0	12.0	20.0	1.0	4.0	53.0	4.0
284483	7.0	7.0	9.0	20.5	7.5	0.0	51.0	4.0
286130	13.5	11.5	12.0	25.0	16.0	11.0	89.0	1.3
286132	10.5	10.0	12.0	20.0	10.0	9.5	72.0	2.7
286140	10.0	8.5	12.0	25.0	12.5	5.0	73.0	2.3
286205	10.0	9.5	11.0	10.0	4.5	5.0	50.0	4.0
286212	7.0	9.5	10.0	14.5	2.0	7.0	50.0	4.0
286270	8.0	7.5	8.5	12.5	10.5	3.0	50.0	4.0
286407	10.0	11.0	12.0	18.0	14.5	9.0	74.5	2.3
286409	9.0	11.5	11.5	27.0	13.5	10.0	82.5	1.7
286427	14.0	11.0	12.0	28.0	17.0	15.5	97.5	1.0
286430	10.0	12.0	12.0	27.0	17.0	13.0	91.0	1.0
286453	12.0	11.0	10.5	22.0	15.0	7.0	77.5	2.0
286456	11.0	8.5	12.0	27.5	16.0	8.0	83.0	1.7
286717	10.5	9.5	12.0	11.0	4.0	6.0	53.0	4.0
287181	12.0	6.0	12.0	22.0	7.0	9.0	68.0	3.0
287189	12.0	12.0	12.0	27.5	15.5	14.5	93.5	1.0
287193	10.0	11.0	11.5	8.0	13.0	10.5	64.0	3.0
287244	11.0	10.5	12.0	25.0	16.0	10.0	84.5	1.7
287257	11.0	11.0	12.0	23.5	11.0	10.0	78.5	2.0
287269	12.0	10.5	12.0	27.0	17.0	12.0	90.5	1.3
287324	9.0	10.5	12.0	25.5	15.0	1.0	73.0	2.3
287359	14.0	10.5	12.0	28.0	15.0	13.0	92.5	1.0
287367	14.0	12.0	12.0	28.0	17.0	17.0	100.0	1.0
287374	7.5	5.0	12.0	23.0	17.0	4.5	69.0	2.7
287394	8.0	9.0	11.0	25.5	13.0	11.0	77.5	2.0
287508	6.0	11.0	12.0	18.0	2.0	2.5	51.5	4.0
287538	12.0	12.0	12.0	28.0	17.0	11.0	92.0	1.0
287549	12.0	10.0	12.0	28.0	17.0	9.5	88.5	1.3
287568	8.0	9.5	12.0	14.0	5.0	2.0	50.5	4.0
287610	11.0	1.0	10.0	26.0	6.0	0.0	54.0	4.0
287652	12.0	11.0	12.0	26.0	17.0	15.0	93.0	1.0
287668	9.0	11.5	10.0	23.5	9.0	4.5	67.5	3.0
287706	9.0	11.5	12.0	17.0	10.0	5.0	64.5	3.0
287738	9.5	6.5	12.0	27.0	15.0	8.0	78.0	2.0
287746	12.0	12.0	10.5	23.0	16.0	6.0	79.5	2.0
287760	9.0	6.0	10.0	24.5	16.0	1.5	67.0	3.0
287776	10.0	11.0	12.0	23.0	16.0	11.0	83.0	1.7
287785	10.0	9.0	12.0	27.0	16.0	8.5	82.5	1.7

287803	9.0	11.5	12.0	16.0	10.0	7.5	66.0	3.0
287867	10.0	11.0	12.0	26.0	17.0	16.0	92.0	1.0
287870	14.0	12.0	12.0	28.0	17.0	15.0	98.0	1.0
287886	9.0	7.5	11.5	8.0	4.0	1.5	41.5	5.0
287911	8.0	10.0	11.5	11.0	6.0	2.5	49.0	5.0
287914	12.0	10.5	10.0	25.0	15.0	7.0	79.5	2.0
287919	14.0	11.5	11.5	27.0	12.0	7.0	83.0	1.7
287926	9.0	9.0	12.0	21.5	3.0	5.0	59.5	3.3
287943	12.0	9.0	11.5	25.0	10.0	0.0	67.5	3.0
287944	8.0	0.0	12.0	8.0	7.5	0.0	35.5	5.0
287946	9.0	11.5	10.0	15.5	17.0	8.0	71.0	2.7
287947	14.0	11.5	12.0	27.0	17.0	6.0	87.5	1.3
287961	7.0	4.0	12.0	14.0	1.0	2.0	40.0	5.0
287968	8.0	10.5	12.0	25.5	17.0	11.0	84.0	1.7
287986	12.0	10.0	12.0	25.0	16.5	4.5	80.0	2.0
288016	8.0	8.0	11.5	8.5	11.0	4.0	51.0	4.0
288022	9.0	9.5	8.5	27.0	4.5	5.5	64.0	3.0
288030	9.0	10.0	9.5	14.0	3.5	4.5	50.5	4.0
288034	14.0	10.0	12.0	28.0	17.0	12.5	93.5	1.0
288144	9.0	5.0	11.0	14.0	9.5	1.5	50.0	4.0
288165	12.0	12.0	11.5	27.0	15.0	7.5	85.0	1.7
288229	8.0	10.0	12.0	24.0	17.0	7.0	78.0	2.0
288249	13.0	10.5	12.0	26.0	16.0	9.0	86.5	1.3
288610	6.0	4.5	10.0	4.0	4.5	5.0	34.0	5.0
288649	14.0	12.0	12.0	28.0	17.0	17.0	100.0	1.0
288779	11.0	4.0	12.0	21.5	14.0	0.0	62.5	3.3
288870	7.0	9.0	12.0	27.0	14.0	13.5	82.5	1.7
288875	12.0	11.5	11.5	27.0	16.0	13.5	91.5	1.0
288897	12.0	2.0	12.0	25.0	12.5	4.5	68.0	3.0
288911	12.0	10.0	12.0	24.0	17.0	16.5	91.5	1.0
288915	13.0	10.5	12.0	24.5	17.0	8.5	85.5	1.7
288958	9.0	9.0	12.0	27.5	16.0	13.5	87.0	1.3
288964	9.0	10.0	12.0	22.5	10.5	7.5	71.5	2.7
288982	13.0	8.0	12.0	21.5	6.5	10.0	71.0	2.7
289031	10.0	12.0	12.0	25.0	15.5	8.5	83.0	1.7
289044	13.0	9.5	12.0	23.5	13.5	6.5	78.0	2.0
289053	10.0	3.5	10.0	17.0	12.5	7.5	60.5	3.3
289058	9.0	10.0	12.0	26.5	17.0	10.0	84.5	1.7
289077	9.0	9.0	12.0	25.0	13.0	9.5	77.5	2.0
289147	6.0	1.0	11.0	15.5	0.0	0.0	33.5	5.0

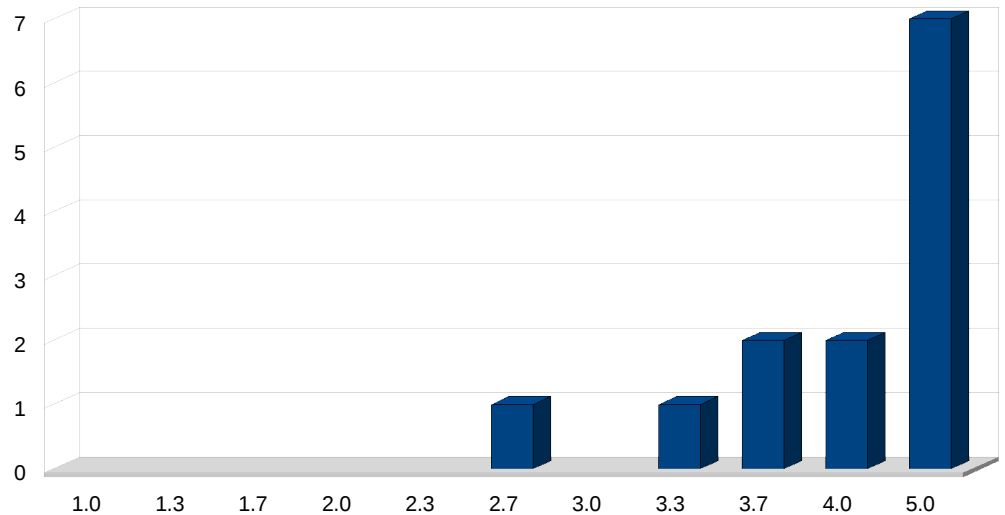
289155	9.0	5.0	12.0	25.0	8.0	3.5	62.5	3.3
289173	7.0	7.5	10.0	13.0	6.0	0.0	43.5	5.0
289269	10.0	12.0	12.0	25.5	17.0	15.0	91.5	1.0
289273	12.0	11.0	12.0	22.0	16.0	1.0	74.0	2.3
289312	8.0	3.5	12.0	8.0	8.0	7.0	46.5	5.0
289428	6.0	11.0	11.0	12.5	14.0	9.5	64.0	3.0
289502	10.0	9.5	9.0	20.0	15.5	5.5	69.5	2.7
289815	3.5	8.0	12.0	14.0	11.0	3.0	51.5	4.0
289817	11.0	5.5	11.5	15.5	3.0	3.5	50.0	4.0
289894	5.0	10.5	12.0	17.0	7.0	4.0	55.5	3.7
289912	14.0	11.0	12.0	28.0	17.0	13.0	95.0	1.0
290013	8.0	1.0	12.0	21.0	6.5	3.5	52.0	4.0
290031	9.0	3.5	9.5	10.0	2.0	3.0	37.0	5.0
290035	12.0	11.5	12.0	27.5	17.0	16.5	96.5	1.0
290279	10.0	3.5	12.0	27.0	10.0	1.0	63.5	3.3
290303	9.0	12.0	12.0	25.0	15.0	15.0	88.0	1.3
290305	5.0	10.0	8.0	0.0	4.0	5.0	32.0	5.0
290309	14.0	12.0	12.0	26.0	16.0	12.0	92.0	1.0
290333	10.0	8.0	10.0	18.5	14.0	4.0	64.5	3.0
290344	11.0	10.5	12.0	20.5	6.5	8.0	68.5	2.7
290345	7.0	0.5	10.0	25.5	2.0	2.0	47.0	5.0
290349	14.0	12.0	9.5	26.5	16.0	8.0	86.0	1.7
290368	14.0	12.0	12.0	28.0	15.0	13.5	94.5	1.0
290394	11.0	9.0	12.0	27.0	16.0	9.0	84.0	1.7
290403	8.0	4.5	11.5	19.0	10.0	7.0	60.0	3.3
290414	10.5	10.5	12.0	25.0	16.5	4.5	79.0	2.0
290477	10.0	9.0	11.0	22.0	10.5	6.0	68.5	2.7
290493	11.0	6.5	12.0	16.5	3.5	6.5	56.0	3.7
290526	8.0	8.0	10.0	13.5	2.0	8.5	50.0	4.0
290558	9.0	1.0	9.5	13.0	3.0	0.5	36.0	5.0
290582	10.0	11.5	11.5	27.0	15.5	9.5	85.0	1.7
290615	11.5	8.5	12.0	28.0	17.0	12.5	89.5	1.3
290659	6.0	9.5	11.5	28.0	16.0	11.0	82.0	1.7
290664	10.0	11.0	12.0	17.0	2.0	9.5	61.5	3.3
290689	10.0	9.0	11.5	19.5	14.0	0.0	64.0	3.0
290734	12.0	6.5	12.0	26.0	15.5	4.5	76.5	2.3
290791	9.0	8.5	10.0	27.0	16.0	11.5	82.0	1.7
291311	12.0	11.5	11.5	26.0	16.0	9.5	86.5	1.3
291376	9.0	3.0	10.0	26.0	16.5	0.5	65.0	3.0
291392	7.0	8.0	8.5	16.0	0.0	3.5	43.0	5.0

291453	12.0	11.5	12.0	14.0	14.0	10.5	74.0	2.3
291483	7.0	10.0	12.0	24.5	1.5	5.0	60.0	3.3
291717	10.0	12.0	12.0	24.0	8.0	1.0	67.0	3.0
291817	7.0	8.0	11.5	26.0	15.0	3.0	70.5	2.7
Median:	69.3						Durchschnitt:	68.4
								2.8



Informatik Diplom

Matrikelnr.	A1	A2	A3	A4	A5	A6	Summe	Note
173053	7.0	2.0	5.0	3.0	0.0	1.5	18.5	5.0
217680	7.0	0.0	0.0	0.0	1.0	0.0	8.0	5.0
221696	10.0	5.5	10.0	0.0	0.0	4.0	29.5	5.0
233180	11.0	12.0	12.0	0.0	3.0	12.0	50.0	4.0
234097	8.0	11.0	12.0	11.0	6.0	13.0	61.0	3.3
242759	8.0	3.5	9.5	17.5	2.5	0.0	41.0	5.0
244719	11.0	11.0	12.0	3.0	4.0	5.0	46.0	5.0
244790	9.0	12.0	6.0	0.0	13.0	13.0	53.0	4.0
248051	9.0	11.0	12.0	0.0	4.5	12.0	48.5	5.0
248546	7.0	10.0	12.0	11.5	0.0	5.0	45.5	5.0
253937	8.0	7.0	10.0	0.0	1.0	0.0	26.0	5.0
256069	8.0	11.0	12.0	25.0	7.0	7.0	70.0	2.7
270284	12.0	11.0	12.0	11.0	3.5	9.0	58.5	3.7
270620	12.0	7.0	8.5	10.0	14.0	6.0	57.5	3.7



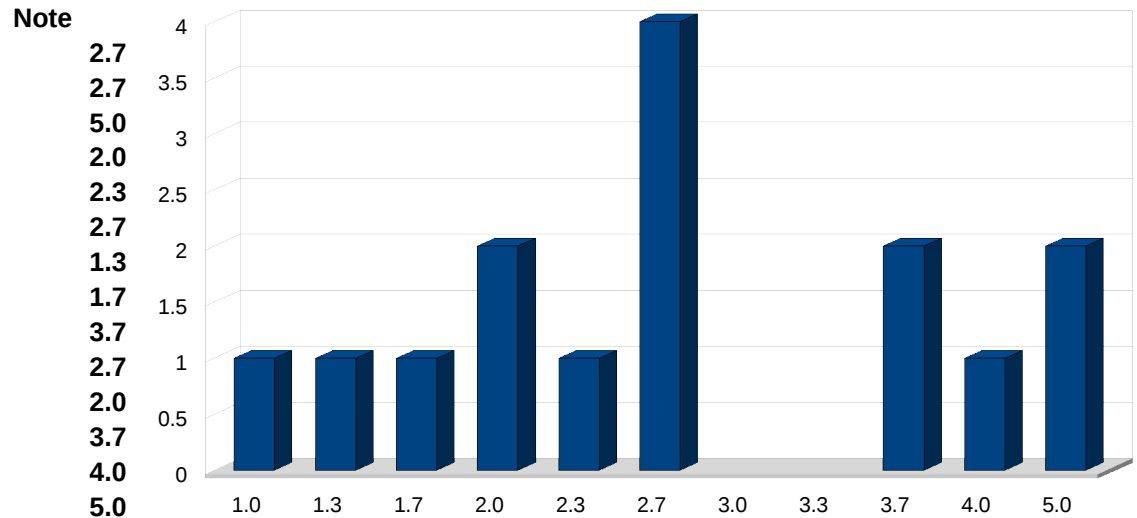
Median: 47.3

Durchschnitt: 43.8

4.4

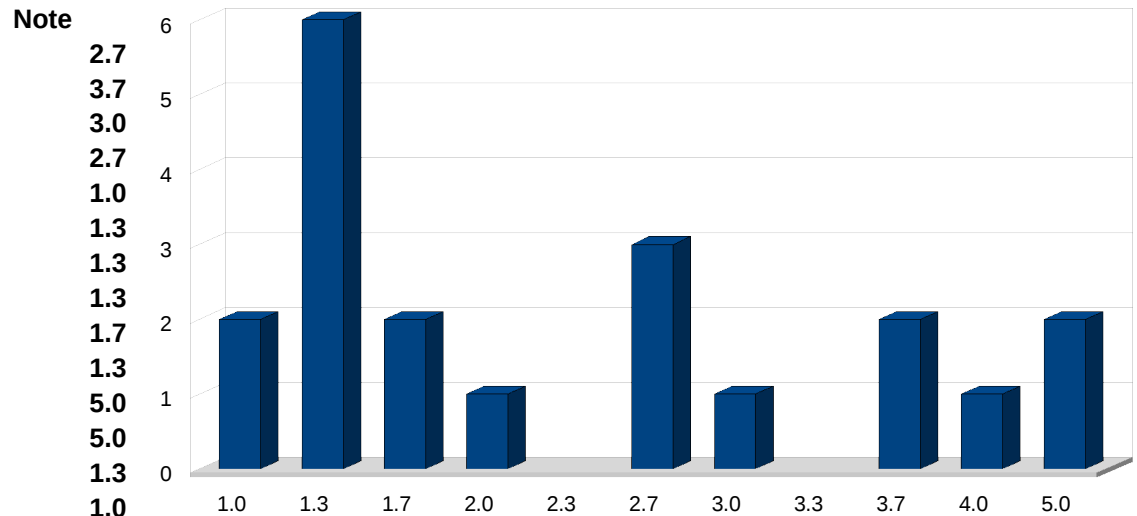
Informatik Lehramt

Matrikelnr.	A1	A2	A3	A4	A5	A6	Summe	Note
225674	10.0	12.0	12.0	25.5	4.0	6.0	69.5	2.7
236361	11.0	9.5	12.0	8.0	16.0	13.0	69.5	2.7
242934	11.0	8.0	8.5	2.0	4.0	9.5	43.0	5.0
265595	12.0	10.5	12.0	26.0	8.0	9.0	77.5	2.0
267556	14.0	4.5	12.0	26.0	14.0	3.0	73.5	2.3
272486	13.0	9.5	11.5	24.0	5.0	6.0	69.0	2.7
280911	10.0	11.5	12.0	25.5	17.0	12.0	88.0	1.3
282037	10.0	11.0	12.0	27.0	13.0	11.5	84.5	1.7
282645	11.0	11.5	9.5	5.0	13.0	7.5	57.5	3.7
285411	10.0	10.5	12.0	27.5	4.0	5.0	69.0	2.7
286963	12.0	12.0	10.0	27.0	17.0	3.0	81.0	2.0
287360	7.0	9.0	12.0	11.0	10.0	9.0	58.0	3.7
289441	9.0	3.5	10.0	14.0	12.0	5.0	53.5	4.0
289549	6.0	2.5	10.0	23.0	0.0	4.5	46.0	5.0
290712	13.0	12.0	12.0	28.0	17.0	13.5	95.5	1.0
Median:	69.5						Durchschnitt: 69.0	2.8



Mathematik Bachelor

Matrikelnr.	A1	A2	A3	A4	A5	A6	Summe	Note
251829	14.0	11.5	12.0	9.0	15.0	9.0	70.5	2.7
278014	9.0	11.0	12.0	14.0	3.0	7.0	56.0	3.7
278046	9.0	10.0	9.5	25.5	12.0	1.0	67.0	3.0
280072	10.0	10.0	12.0	22.0	13.5	4.0	71.5	2.7
285317	12.0	11.5	11.0	25.0	15.5	16.0	91.0	1.0
285343	12.0	10.5	12.0	28.0	17.0	9.5	89.0	1.3
285537	9.0	12.0	12.0	25.0	16.0	15.0	89.0	1.3
287268	11.0	11.0	12.0	24.5	17.0	14.5	90.0	1.3
287447	9.0	10.0	12.0	25.0	14.0	13.5	83.5	1.7
287509	11.0	11.5	12.0	23.0	16.5	15.0	89.0	1.3
287813	7.0	15.5	10.0	7.0	4.0	3.0	46.5	5.0
287937	10.0	6.5	9.5	0.0	2.5	5.5	34.0	5.0
288266	13.0	8.5	12.0	24.5	16.5	12.0	86.5	1.3
288974	13.0	11.5	12.0	26.0	14.5	17.0	94.0	1.0
289297	13.0	11.5	12.0	20.0	17.0	8.5	82.0	1.7
289381	9.0	11.5	10.0	26.5	17.0	7.0	81.0	2.0
290485	11.0	12.0	10.0	26.5	16.0	14.0	89.5	1.3
290756	9.0	11.5	12.0	20.0	15.0	4.0	71.5	2.7
290839	9.0	10.0	9.5	14.5	7.0	3.0	53.0	4.0



291122 6.0 8.5 10.0 8.0 14.0 8.5 55.0 3.7

Median: 81.5 Durchschnitt: 74.5 2.4

Mathematik Diplom

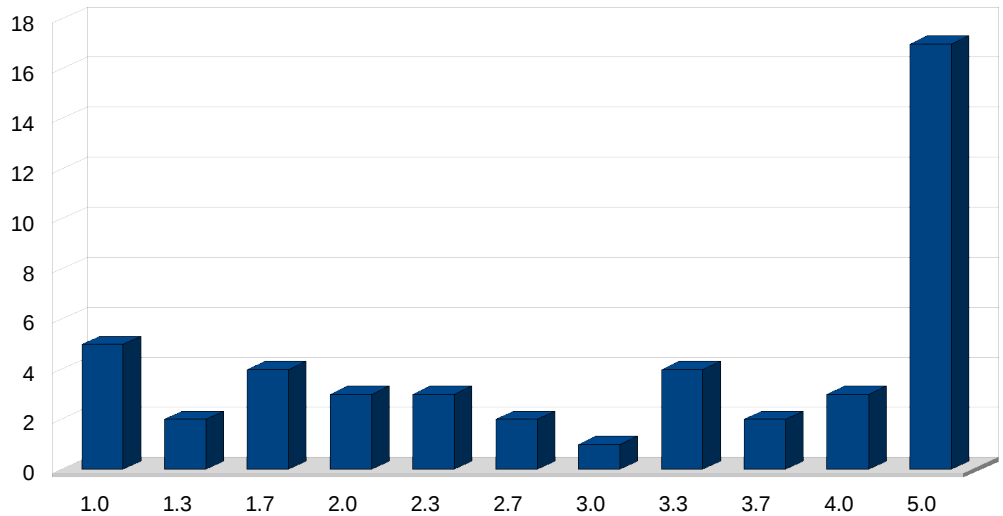
Matrikelnr.	A1	A2	A3	A4	A5	A6	Summe	Bestanden
264771	9.0	9.5	12.0	3.0	6.0	6.0	45.5	

Schülerstudium

Initialen	A1	A2	A3	A4	A5	A6	Summe	Note
V. M.	12	9	12	24.5	16	14	87.5	1.3

CES Bachelor, CES Diplom, Werkstoffinformatik

Matrikelnr.	A1	A2	A3	A4	C++	Summe	Note
262209	6.0	5.5	9.0	3.0	6.0	29.5	5.0
269296	9.0	7.5	12.0	11.0	20.0	59.5	3.3
270826	7.0	10.0	12.0	16.5	19.0	64.5	3.0
270838	6.0	11.0	10.5	13.0	0.0	40.5	5.0
274290	10.0	8.5	10.0	10.5	12.0	51	4.0
275663	9.0	5.0	9.5	8.0	7.5	39	5.0
276713	8.0	10.5	9.5	5.5	0.0	33.5	5.0
279957	6.0	5.5	12.0	7.0	6.5	37	5.0
281185	9.0	7.5	10.0	16.0	2.5	45	5.0
281983	2.0	7.5	7.5	0.0	0.0	17	5.0
282121	6.0	4.0	11.5	14.5	14.5	50.5	4.0
282173	9.0	8.5	12.0	17.0	23.0	69.5	2.7
283884	4.0	6.5	8.5	1.0	6.0	26	5.0
284430	8.0	11.5	12.0	14.5	14.0	60	3.3
284442	5.0	5.5	5.0	4.0	0.0	19.5	5.0
284485	4.0	3.5	11.0	5.0	2.0	25.5	5.0
286441	13.0	11.5	12.0	12.0	24.5	73	2.3
287200	12.0	11.0	9.0	15.5	13.0	60.5	3.3
287251	7.0	9.5	9.0	0.5	1.0	27	5.0
287281	6.0	2.5	7.0	23.0	9.5	48	5.0
287302	10.0	10.0	12.0	21.0	16.0	69	2.7
287315	8.0	11.0	12.0	27.0	23.0	81	2.0
287372	2.0	1.5	8.5	13.0	5.5	30.5	5.0
287393	11.0	6.5	12.0	28.0	26.0	83.5	1.7
287470	6.0	4.0	10.0	14.5	15.5	50	4.0
287799	5.0	0.0	2.0	0.0	2.0	9	5.0
287888	7.0	12.0	12.0	24.5	17.5	73	2.3
287981	12.0	11.5	11.5	26.0	25.0	86	1.7



288745	14.0	7.0	12.0	26.0	21.5	80.5	2.0
288865	6.0	8.0	12.0	16.0	5.0	47	5.0
288872	10.0	9.0	12.0	22.0	4.0	57	3.7
288884	9.0	11.0	11.5	25.0	20.5	77	2.3
288906	8.0	2.5	12.0	14.5	18.5	55.5	3.7
288941	14.0	12.0	12.0	27.0	24.5	89.5	1.3
289090	14.0	12.0	12.0	27.5	32.5	98	1.0
289111	11.0	11.5	11.5	28.0	24.5	86.5	1.3
289213	11.0	8.5	10.0	27.0	29.5	86	1.7
289281	7.0	7.5	10.0	14.0	0.0	38.5	5.0
289431	14.0	12.0	12.0	25.0	31.0	94	1.0
289777	10.0	10.5	12.0	25.0	34.0	91.5	1.0
289816	12.0	12.0	12.0	28.0	32.0	96	1.0
290038	11.0	7.5	12.0	8.0	21.0	59.5	3.3
290363	10.0	11.5	12.0	22.0	22.0	77.5	2.0
290498	7.0	10.5	9.5	8.5	1.0	36.5	5.0
290776	11.0	10.5	12.0	27.0	25.5	86	1.7
290901	12.0	12.0	12.0	26.5	32.0	94.5	1.0
Median:	59.5					Durchschnitt:	58.9